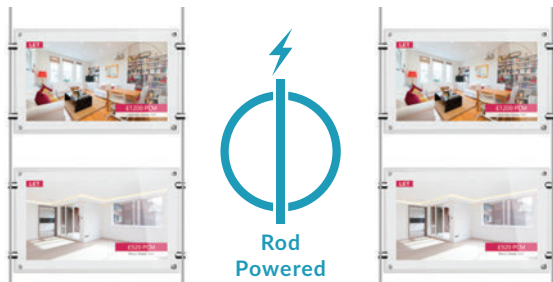


## 15" Digital Rod Displays



### Rod Powered Displays

No mains cable is required to provide power as these innovative screens are powered via the rods on which they are mounted. Achieve a clean and seamless installation with no cables whatsoever for a modern and sleek feel.



### Sunlight Readable Digital Light Pockets

Catch the attention of passers-by and potential customers with these 1,000cd/m<sup>2</sup> high brightness LCD digital light pockets. Ideal for combining with static light pockets in window displays to provide eye-catching motion alongside printed signage.



Ideal for Estate Agents



Rear Graphics Pocket



Android Media Player



LED Frame



Integrated Speakers



Temperature Control



Wide Viewing Angle



Free Scheduling Software



Multi-Screen Synchronisation

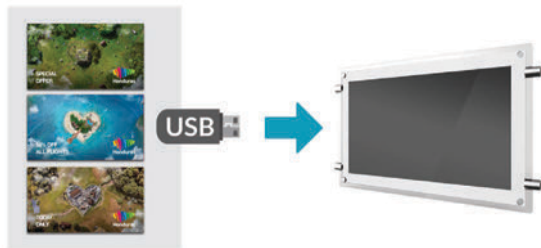


Network Upgrade

## Other Features

### Plug and Play

Plug and Play is the most straightforward way to upload content to the screen. Simply load images and videos onto a USB stick and insert into the display; your images and videos will now play in a continuous loop.



### 1,000cd/m<sup>2</sup> Commercial Panel

Brightness is paramount when using outward facing screens, these displays use commercial grade high brightness panels (1,000cd/m<sup>2</sup>); almost 4 times brighter than a standard home TV to allow easy readability in window displays.



### Rear Graphics Pocket

On the rear of the display there is a pocket that a printed graphic can be inserted into to really maximise on the space used. This can be removed if necessary but comes as standard at no extra cost.



### 24/7 Usage

These displays use a commercial grade LCD panel and LED backlight. They have the ability to be in constant use 24/7 for over 70,000 hours and are designed for commercial use.



### Android Media Player

There is an integrated Android media player inside the screen allowing you to upgrade to a network version without needing any additional hardware. You can also install third party Android apps if required.



### LED Frame

These displays have an attractive LED illuminated bevelled edge to compliment traditional static light pockets seamlessly.



### Synchronise Multiple Displays

Synchronise your content across multiple screens in the same window display. You can achieve the effect of one large image or video across multiple screens or have content playing and transitioning in perfect unison.



### Optional Network Upgrade

For a small charge you can upgrade your screen to be networked, allowing you to connect your screen via Wi-Fi, LAN or 4G, then remotely update it over the internet.



# Key Features



ROD POWERED DISPLAYS



SUNLIGHT READABLE (1,000CD/M<sup>2</sup>)



LED FRAME



REAR GRAPHICS POCKET

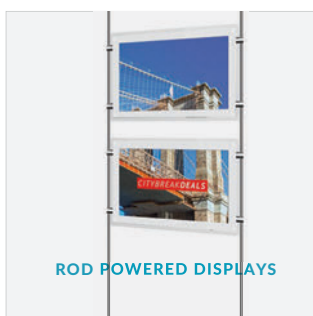


ANDROID MEDIA PLAYER

PLUG AND PLAY

24/7 USAGE

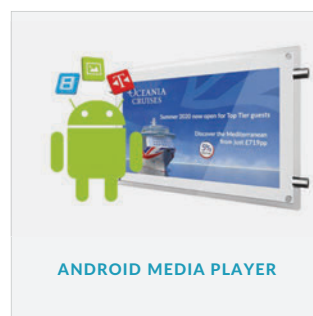
OPTIONAL NETWORK UPGRADE



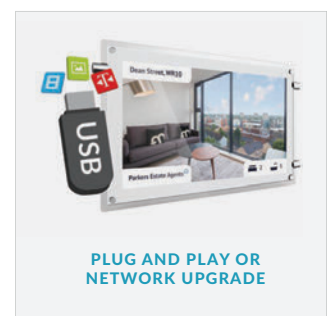
ROD POWERED DISPLAYS



SUNLIGHT READABLE



ANDROID MEDIA PLAYER



PLUG AND PLAY OR NETWORK UPGRADE



# Specification Table

		15 Inch
Panel	Resolution	1920x1080
	Display Area (mm)	344x193.5
	Aspect Ratio	16:9
	Brightness (cd/m <sup>2</sup> )	1000
	Colour	16.7M
	Viewing Angle	178°
	Contrast Ratio	5000:1
Audio	Speaker Type	5W, 8Ω (x2)
AV Inputs	Video	HDMI, VGA
	Audio	Audio Socket (3.5mm)
Power	Power Consumption (W)	16
	Input Voltage (with transformer)	12V (DC)
Mechanical	Unit Size (WxHxD mm)	430x280x49.2*
	Package Size (WxHxD mm)	348x489x121.5
	Net Weight (kg)	3.8
	Gross Weight (kg)	5.2
Environmental	Operating Temperature	0 °C to 50 °C
	Storage Temperature	-30°C to 60°C
	Operating Humidity	10% to 80%
	Storage Humidity	5% to 95%
Computer	Media Formats	Video (MPG, AVI, MP4, RM, RMVB, TS), Audio (MP3, WMA), Image (JPG, GIF, BMP, PNG)
	Media Resolution	1920x1080/1080x1920
	Internal Memory	6GB
	CPU	Quad-Core Cortex-A17@1.61GHz
	GPU	Mali-T760 MP4 @600MHz
	RAM	2GB DDR3
	ROM	8GB NAND
	USB	USB2.0 HOST (x2)
	LAN	10/100M Ethernet (Network Version Only)
	Wi-Fi	802.11b/g/n/ac (Network Version Only)
	OS	Android 5.1.1
Accessories	Graphic Engine	OpenGL ES 1.1/2.0/3.0/3.1, OpenCL 1.1, Renderscript, Direct3D 11.1
	Included	Scheduling Software, Remote Control, User Manual
Warranty	Optional	Network Upgrade
	Warranty Period	3 Year Warranty
	Technical Support	Lifetime

\*Includes Rear Graphics Pocket  
Errors and omissions excepted



# Technical Drawing

---

